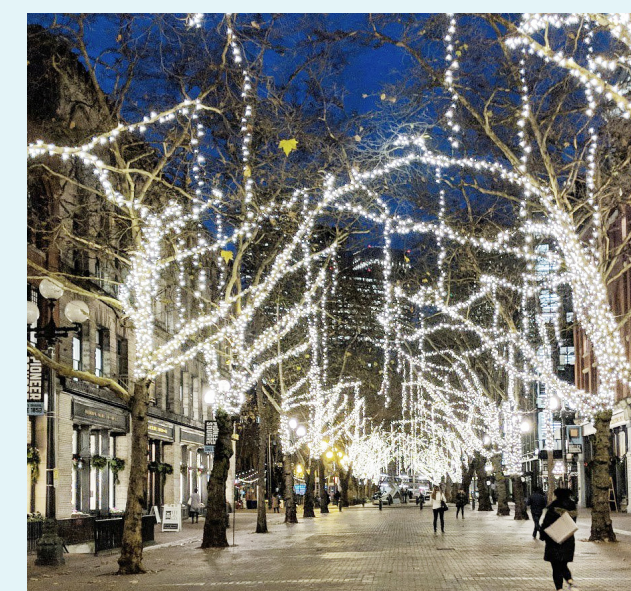


What is Imagine Greater Downtown?

Seattle is growing fast.

We need your help planning great streets and lively public spaces. Your creative concepts will help us develop a vision for the heart of Seattle in 2035. We're excited to hear your ideas, both big and small!



IMAGINE GREATER DOWNTOWN IS A PARTNERSHIP BETWEEN



City of Seattle



King County



SOUNDTRANSIT

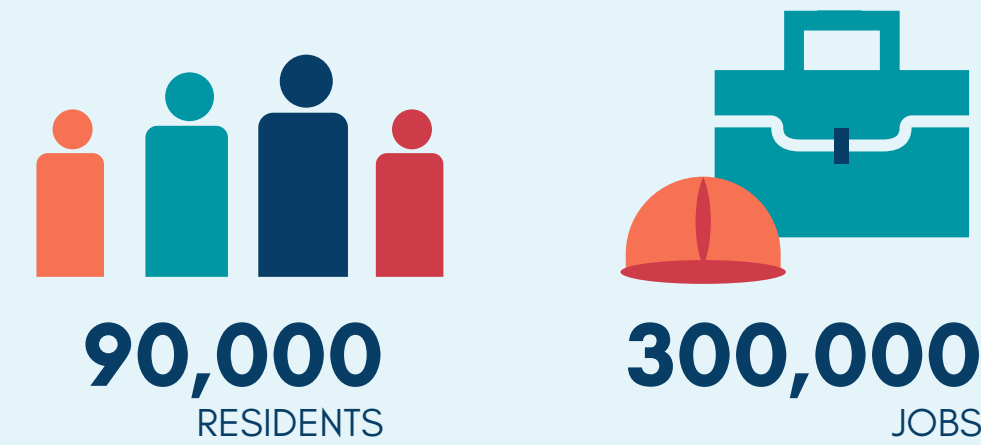


Downtown
Seattle
Association

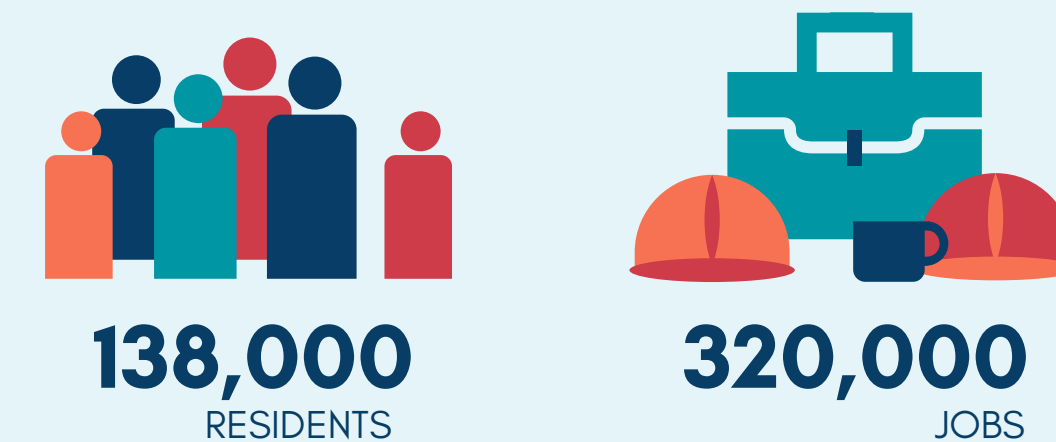
In coordination with the Port of Seattle and the Washington State Department of Transportation

Existing Conditions and Trends

Today



2035



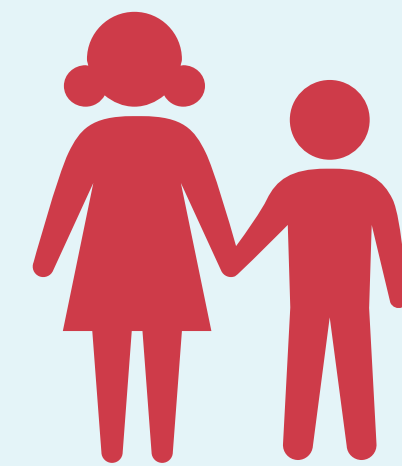
Planning for growth

By 2035 we are planning for about **53%** more people living and **7%** more people working in greater downtown Seattle.

More families, youth, and seniors are living in greater downtown

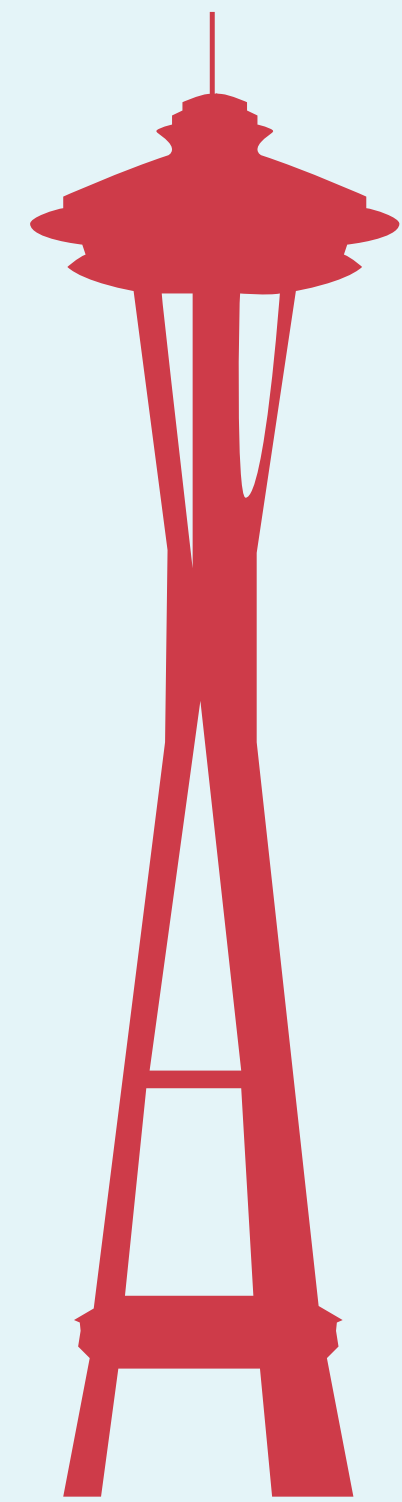


The number of school age children in the center city almost **doubled** from **1,767** to **3,356** between 2010 and 2018.



Citywide **17%** of people are over 60 years old. **25%** of people living in Chinatown ID are over 65, whereas only **6%** of the population is over 65 in Capitol Hill.

Existing Conditions and Trends



Tourism and visitors

Seattle is popular! Key destinations in greater downtown attracted the following in 2017:

Pike Place Market: **15 million**

Seattle Center: **12 million**

Convention Center: **400+ events; 400,000+ attendees**

Toured a Museum or Exhibit: **6 million**

Major Sports Events: **4 million**

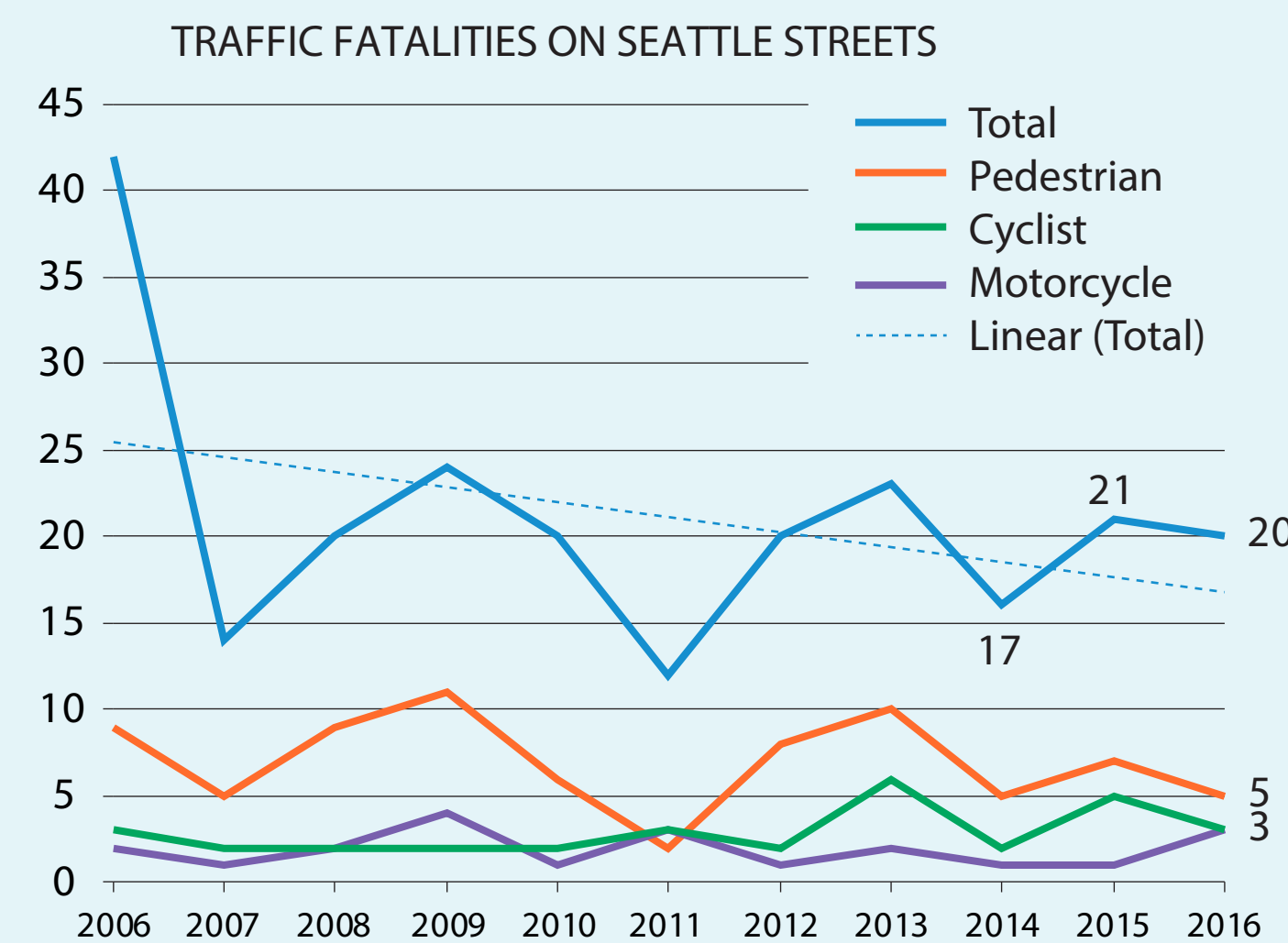
Transportation arrivals/users:

Colman Ferry Terminal: **8.5 million**

King Street Station: **2.7 million**

Cruise Piers 66 & 91: **1 million**

Existing Conditions and Trends



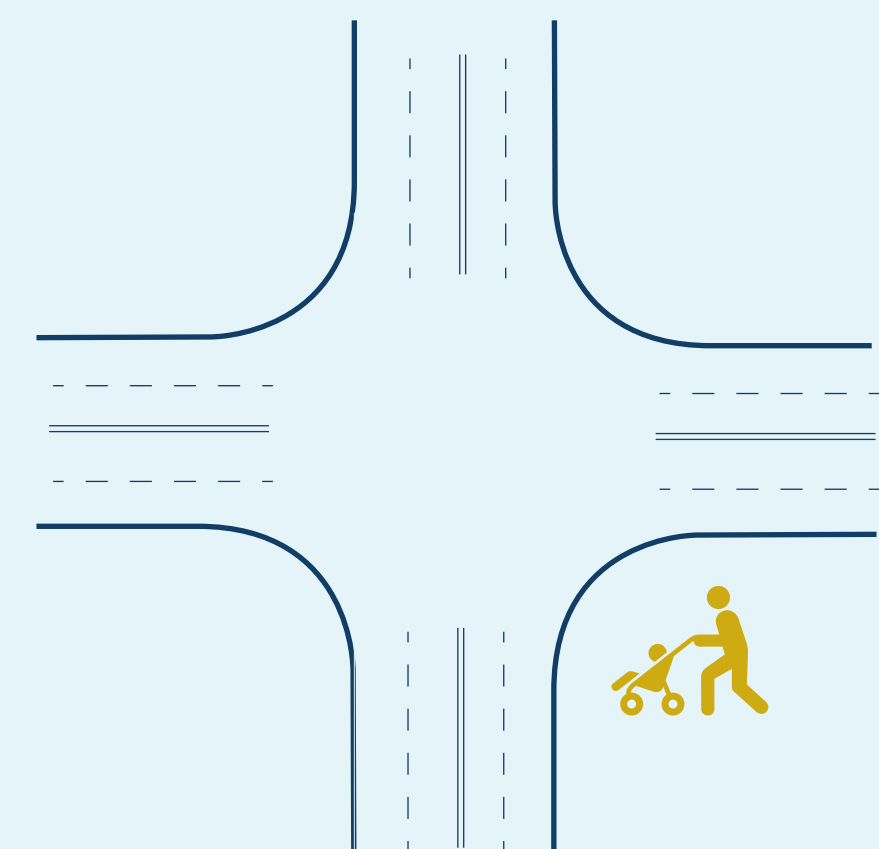
Pedestrian and bicycle safety

Traffic fatalities on Seattle streets have been declining in recent years; however, pedestrians and bicyclists still made up **40%** of all traffic fatalities in 2016.

Need for better walking environment

Greater downtown has a robust sidewalk network, a Vision Zero Action plan committed to making streets safe for the most vulnerable people walking or biking, and a growing number of bicycle and active transportation facilities, but safety and accessibility is still a concern for residents and visitors.

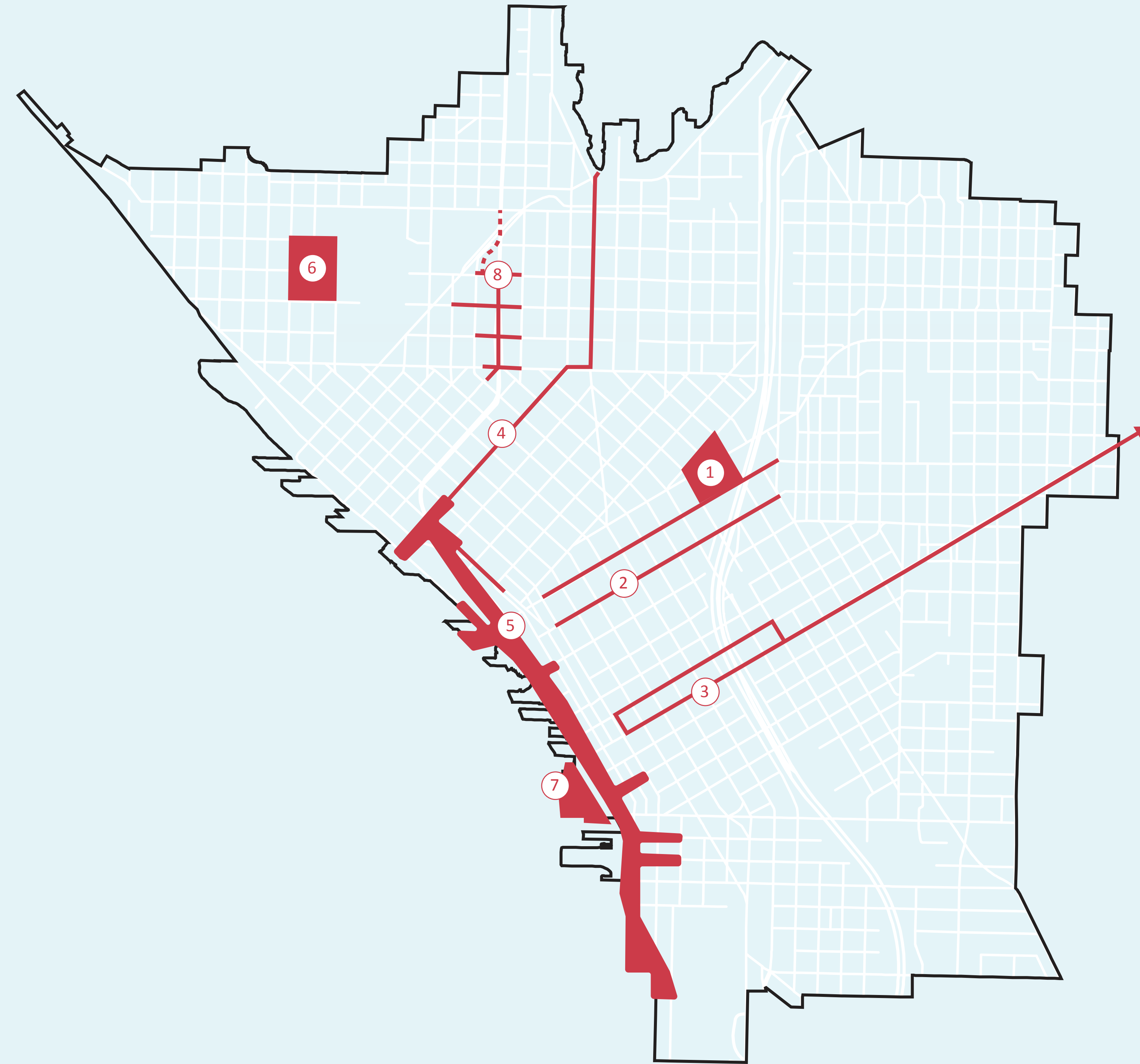
23% of blocks in greater downtown are steeper than 5% and **53%** of blocks have four or more vehicle travel lanes making them difficult to cross as a pedestrian and especially uncomfortable for families with young children, seniors, or people with disabilities.



Existing Conditions and Trends

Major planned projects in greater downtown

- 1 - Washington State Convention Center
- 2 - Pike and Pine
- 3 - Madison St. BRT
- 4 - Market to Mohai
- 5 - Waterfront Seattle
- 6 - Key Arena
- 7 - Coleman Dock
- 8 - SR 99 Tunnel North Portal

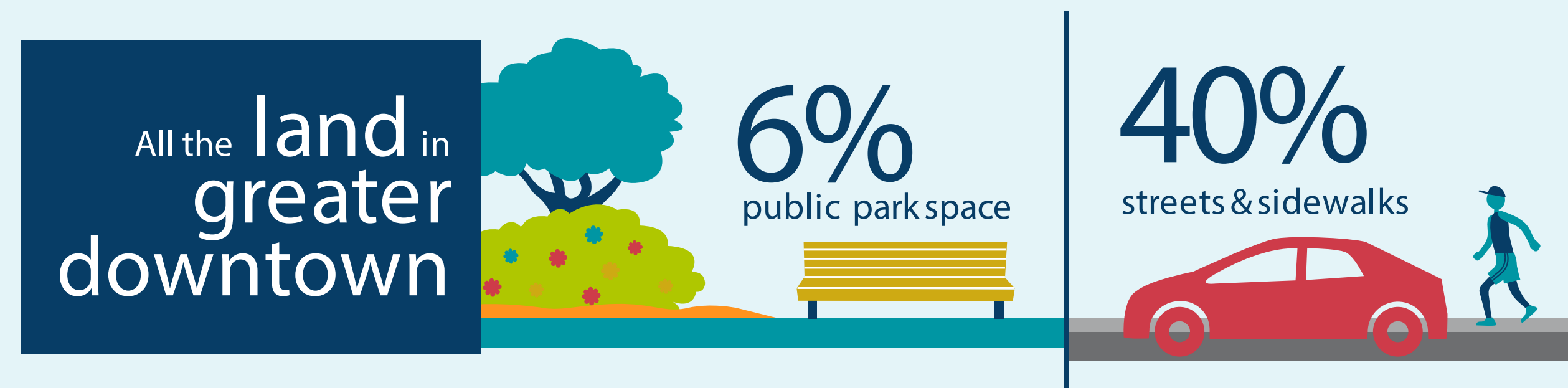


IMAGINE GREATER DOWNTOWN IS A PARTNERSHIP BETWEEN



In coordination with the Port of Seattle and the Washington State Department of Transportation

Existing Conditions and Trends



Need for more and better green space

Greater downtown has a disproportionately small amount of green open space relative to the rest of Seattle. Only **6%** of land in greater downtown is parks or public open space, whereas citywide, parks and public space represent **12%** of land.



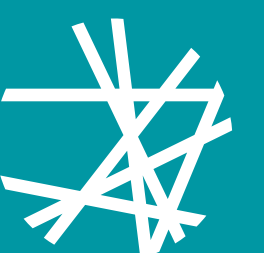
Park gap in First Hill

The First Hill neighborhood is underserved in parks as compared to other areas of the city.



Limited developable land

Greater downtown has very few large parcels that are a half block or more that are available for public use or acquisition for parks or open space.



Existing Conditions and Trends



Greater downtown is diversifying

There are over **29** different languages spoken across the neighborhoods in greater downtown.

1 in 5 greater downtown residents are foreign born



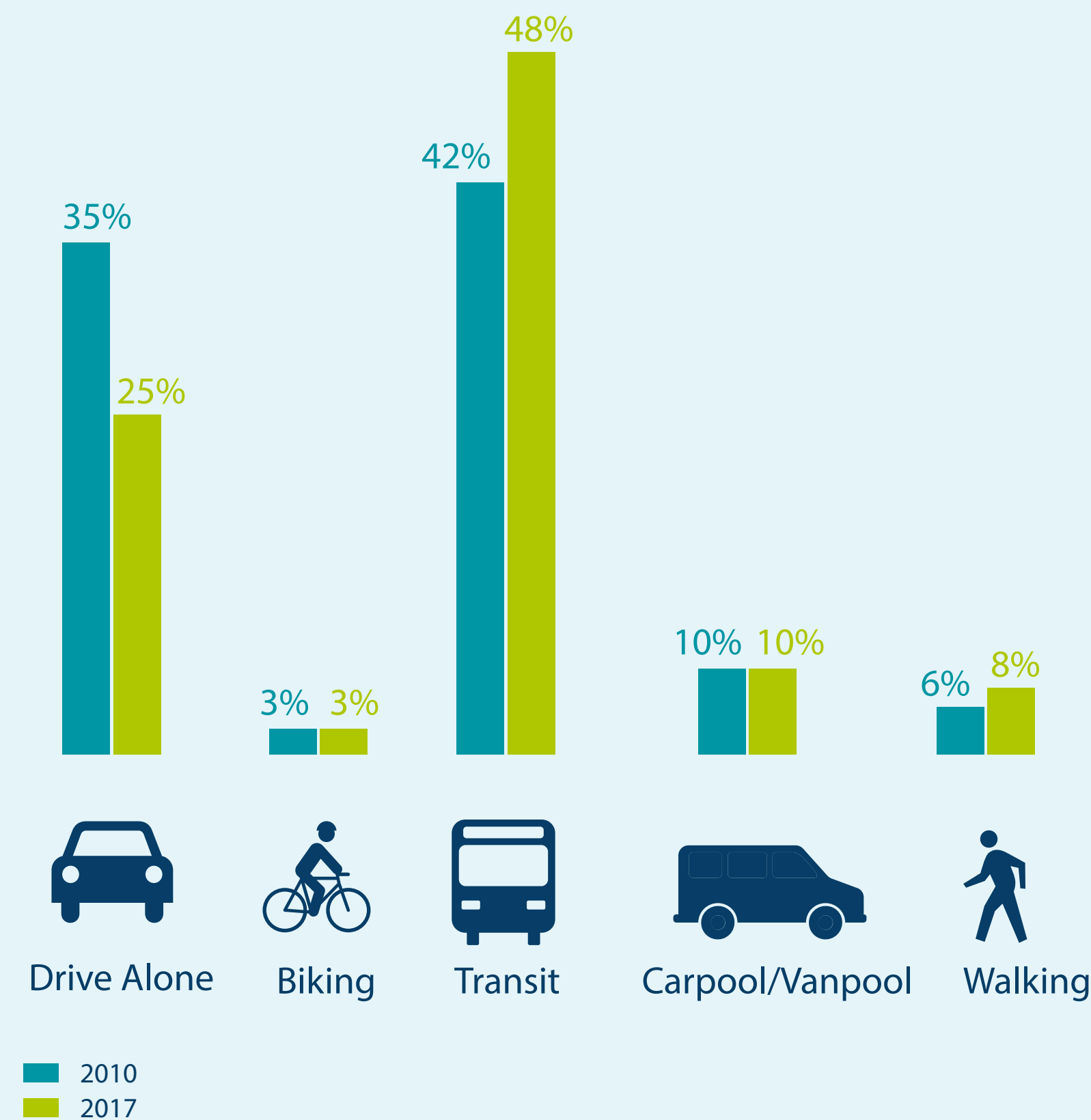
Health outcomes

Seattle is one of the healthiest cities in the U.S. However, there are significant health disparities within greater downtown neighborhoods.

First Hill, Chinatown/ID and parts of Belltown have higher rates of long-term poor health outcomes (e.g., diabetes, obesity, asthma) compared with other neighborhoods. These are also communities with more seniors, people of color, and lower income households.

Diabetes, obesity, and asthma are preventable and can be improved with mobility choices and access to open space.

Existing Conditions and Trends



Commuting trends

Since 2010 more people are using transit over the single-occupancy vehicle, but emerging and shared mobility services, changing trends in freight and service delivery, and autonomous vehicles mean travel needs are going to change dramatically in coming years.

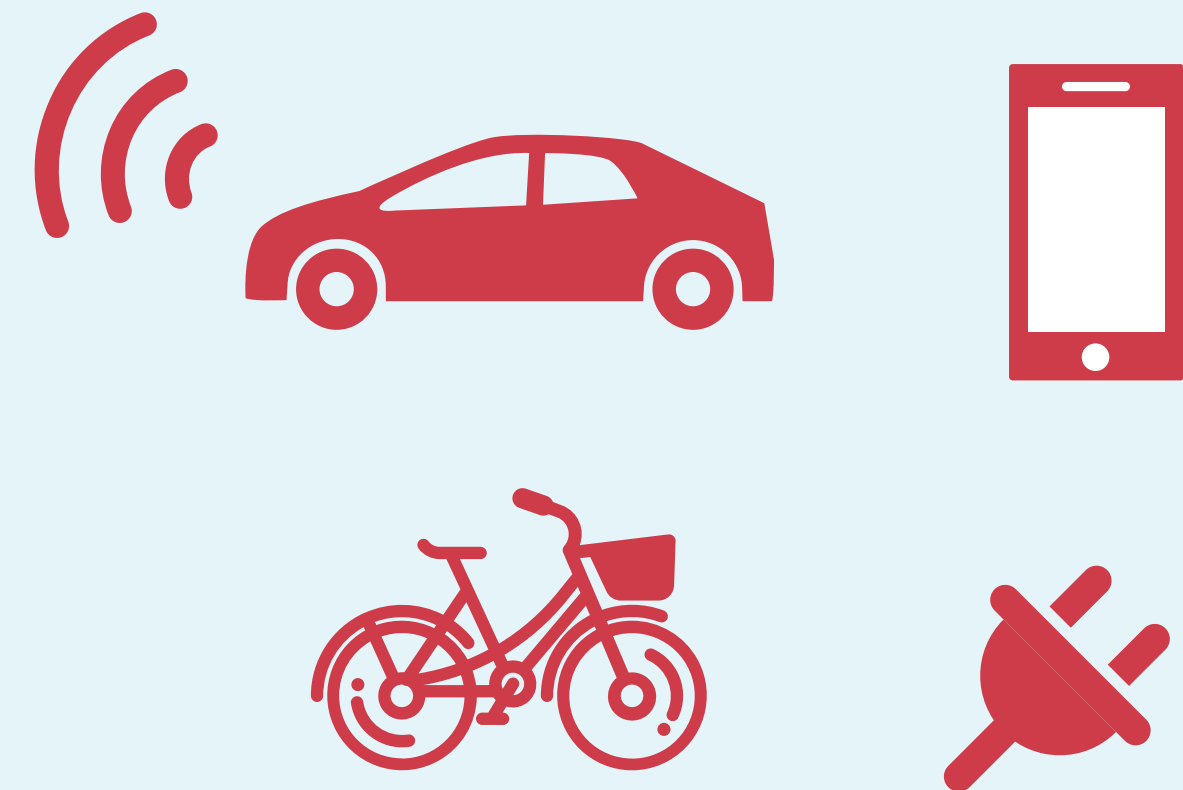
Transit is expanding

Currently, about **102,000** people use transit to travel to work in the morning, in 2035 this will increase to about **134,000** people.

Sound Transit 2 and Sound Transit 3 light rail service will transform where and how people arrive in and experience Seattle. There will be four additional light rail stations in downtown and new service to the east side and Lynnwood. There is also planned new passenger only ferry to Southworth and Kingston.



Existing Conditions and Trends



New mobility options

In the past year we have seen rapid growth in new mobility options, including the rising use of TNC's (Uber and Lyft), dockless bike share, e-bikes, and micromobility devices.

Between 2016-2017 there was a **46%** increase in TNC trips in Seattle.

In May 2018 there were over **200K** bike share trips.



Active transportation is growing

The bike network in greater downtown is expanding with the recent completion of new facilities including the 2nd Ave and 7th Ave protected bike lanes.

More people are walking to work. The share of walking trips is highest among people commuting to South Lake Union (**17%**), Denny Triangle (**13%**), and Uptown (**8%**).

Our vision for greater downtown in 2035

Greater downtown is the heart of Seattle

It's a place for people, where life unfolds on inspiring streets and inviting public spaces.

We value

People First

Cultivate Community

Create places and experiences that bring us together and encourage positive interactions

Promote Health

Support active lifestyles that foster physical and emotional well-being

Racial And Social Justice

Lead with Equity

Improve outcomes for the most vulnerable groups and individuals

Proactive Participation

Initiate, invite, listen to, respect, and empower all people

Access To Opportunity For All

Provide Efficient Mobility Options

Implement distributed, convenient, reliable, and accessible mobility options

Connect Safely

Ensure that streets and public spaces are safe, accessible, and comfortable

Prioritize People and Goods

Create efficiency where needed to keep streets moving

Environmental Stewardship

Be Bold Leaders

Model climate-positive policies and actions for a sustainable future

Let Nature Thrive

Foster connections with nature and integrate natural settings into daily life

Cultural Diversity

Celebrate Seattle

Enhance each neighborhood's identity and individual belonging in streets and public spaces

Honor All Cultures

Acknowledge the triumphs and challenges of our collective past

Collaboration

Co-Create Success

Engage people to develop shared outcomes that invest in future generations

Take the Long View

Steadily build an honorable legacy together



IMAGINE GREATER DOWNTOWN IS A PARTNERSHIP BETWEEN



In coordination with the Port of Seattle and the Washington State Department of Transportation

Our vision for greater downtown in 2035

What are your thoughts on our vision and values? Are we missing anything?

VISION: Greater downtown is the heart of Seattle. It's a place for people, where life unfolds on inspiring streets and inviting public spaces.

VALUES: People First | Racial And Social Justice | Access To Opportunity For All | Environmental Stewardship | Cultural Diversity | Collaboration

Use sticky notes to share your thoughts



IMAGINE GREATER DOWNTOWN IS A PARTNERSHIP BETWEEN



In coordination with the Port of Seattle and the Washington State Department of Transportation

Project and outreach timeline

September - December 2018

January - March 2019

Phase 1: Gather Big Ideas

Phase 2: Prioritization and Create Vision Plan

Outreach events

○ October 18
open house

○ Spring 2019
open house date TBD

Engagement: We are engaging with communities as part of the project and will continue to invite, listen, and empower all people. We're working with the Department of Neighborhoods Community Liaisons to engage the following communities via pop-up events and focused conversations:
Russian, African American, Latinx, Immigrants and Refugees, Chinese, Native peoples, Unhoused, Filipinos/Pacific Islanders, Vietnamese

Online tools

Map and photo feedback exercises

Prioritization exercises

Advisory Group

The Advisory Group is made up of ~30 community members selected based upon the unique interests, backgrounds, and perspectives they bring to the conversation. They are working with our partner agencies to make sure that Imagine Greater Downtown considers and reflects the many communities that live, work, and play in downtown Seattle.

○ September
meeting

○ November
meeting

○ January
meeting

Imagine Greater Downtown Vision Plan

How will the plan be used?

The purpose of the plan is to create a shared urban design and mobility vision for the heart of Seattle. We are creating a long-range visioning document that identifies opportunities for public place and transportation enhancements to serve our communities into the future as they continue to grow.



IMAGINE GREATER DOWNTOWN IS A PARTNERSHIP BETWEEN



In coordination with the Port of Seattle and the Washington State Department of Transportation

Big moves and key ideas

We've had a lot of great input so far, which we've organized into 11 big moves with key ideas that can help us achieve our vision and values for greater downtown in 2035. These are draft ideas, based on what we've heard from the community so far.

We need your help!

- What are we missing?
- What is not clear?
- How do these match your experience of greater downtown today?
- What should we think about to help implement these ideas equitably – to make greater downtown welcoming for people of all incomes, races, cultures, gender identities, and abilities?



IMAGINE GREATER DOWNTOWN IS A PARTNERSHIP BETWEEN



In coordination with the Port of Seattle and the Washington State Department of Transportation

A quality transit experience

The vision

- In 2035, most people will arrive to greater downtown by transit
- Great walking streets radiate from new downtown transit hubs serviced by light rail
- Transit is the preferred mode of travel and is key to creating an affordable city
- As light rail expands, bus transit continues to be a critical access mode for families and people of all abilities

How we'd get there

- Make transit hubs places to celebrate arrivals, enhance the public realm, and integrate all modes of transportation (bus, train, bike, ride share, etc.)
- Create a comprehensive transportation experience that's safe, comfortable, affordable, and has clear signage so users can make the best decision for their needs
- Provide frequent transit service that has priority over vehicular traffic
- Continue to enhance Third Avenue's role as a transit and safe, pleasant pedestrian street

What we've heard



- Times and prices for greater downtown buses aren't always accessible for people of color from other neighborhoods
- Signage needs to be easy to understand — use pictures!
- Facilities need to serve people of all ages and abilities



Share your thoughts!



IMAGINE GREATER DOWNTOWN IS A PARTNERSHIP BETWEEN



City of Seattle



King County



SOUNDTRANSIT



Downtown
Seattle
Association

In coordination with the Port of Seattle and the Washington State Department of Transportation

Walking streets as places

The vision

- Walking is how most people get around greater downtown, including for children and older adults
- Great walking streets that are safe and comfortable for all abilities connect neighborhoods and key destinations
- Greater downtown fosters a culture of strolling and community street life
- Every transit trip begins and ends with walking/rolling
- Enhanced walking streets with landscaping, benches and amenities create places for rest, socializing and refreshment

How we'd get there

- Connect all neighborhoods with pleasant pedestrian routes
- Create pedestrian-only spaces and streets that prioritize transit and streetcars
- Bridge the barriers – make crossing highways and major arterials safe and comfortable
- Make it accessible – prioritize pedestrian routes that avoid steep hills and use indoor escalators to fill gaps in the network, repair sidewalks, and improve wayfinding

What we've heard



Seattle's hills pose challenges! To make walking accessible, people need to know about ways to get around them, like elevators and flat routes.



Share your thoughts!



IMAGINE GREATER DOWNTOWN IS A PARTNERSHIP BETWEEN



City of Seattle



King County



SOUNDTRANSIT



Downtown
Seattle
Association

In coordination with the Port of Seattle and the Washington State Department of Transportation

Connect to and use the lake and sound

The vision

- Streets and views connect people to the water
- City/water connections are natural and enjoyable
- All greater downtown neighborhoods have a pleasant pedestrian route to Elliott Bay or Lake Union
- The water's edge is accessible to everyone

How we'd get there

- Continuous walking paths along the water's edge
- Elevate cultural connections between the water and the land (for example, boat landings for native communities)
- Offer affordable options to get around by boat, such as adding water taxis and kayak share in Elliott Bay and Lake Union
- Create affordable public spaces on the water (for example, a pool barge or kayak rental)
- Support free and frequent activities (concerts, festivals, outdoor movies, etc.) on the waterfront
- Support implementation of waterfront public space at Pier 48

What we've heard



- People want more water access, views, and walking paths along the water's edge
- Let's make water recreation activities accessible to all, not just those with high incomes



Share your thoughts!



IMAGINE GREATER DOWNTOWN IS A PARTNERSHIP BETWEEN



City of Seattle



King County



SOUNDTRANSIT



Downtown
Seattle
Association

In coordination with the Port of Seattle and the Washington State Department of Transportation

Welcoming, inclusive, complete neighborhoods

The vision

- Walkable connections between services and community spaces
- The distinct character of each neighborhood is expressed and reinforced
- Seattle's distinct cultural histories, places, and events are celebrated and honored
- Each neighborhood has transportation choices

How we'd get there

- Ensure neighborhoods have a central gathering place, square, or park as a public focal point
- Express the distinctive quality of each neighborhood identity in architecture, places, and streetscapes
- Foster vibrant public life through music, identity, food, human contact, events, and celebrations
- Involve people of all ages, races, cultures, incomes, and abilities in planning neighborhood spaces to create sense of belonging

What we've heard



- Create lively nighttime streets with vendors for people to gather!
- Activate alleys for street markets!
- Neighborhoods need more self-determination
- Reveal Seattle's native history across the neighborhoods



Share your thoughts!



IMAGINE GREATER DOWNTOWN IS A PARTNERSHIP BETWEEN



City of Seattle



King County



SOUNDTRANSIT



Downtown
Seattle
Association

In coordination with the Port of Seattle and the Washington State Department of Transportation

Parks, recreation, and nature

The vision

- Access to a robust and varied collection of parks and public spaces is distributed equitably across all greater downtown
- Parks and public space prioritize culturally-inclusive design and programming
- Nature is restored and woven into all scales of daily life
- Neighborhood health outcomes are improved through better access to parks and open space

How we'd get there

- Provide walkable civic spaces across all Greater Downtown neighborhoods
- Transform a downtown corridor into a linear park
- Connect parks and open space with a network of well-landscaped streets
- Support the community's vision for event streets. For example on King Street in Little Saigon
- Better leverage private development for public space, public roofs, and sky gardens
- Address open space disparities. For example, further community supported open space opportunities in First Hill, Chinatown International District, Belltown, and Denny Triangle

What we've heard



- More intergenerational gathering spaces that support culturally significant recreational activities
- Our public spaces must feel welcoming to people of all ethnicities and races



Share your thoughts!



IMAGINE GREATER DOWNTOWN IS A PARTNERSHIP BETWEEN



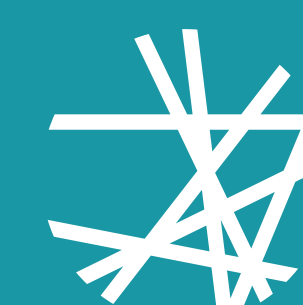
City of Seattle



King County



SOUNDTRANSIT



Downtown
Seattle
Association

In coordination with the Port of Seattle and the Washington State Department of Transportation

Jackson Street hub as a people place

The vision

- The Jackson Hub is a welcoming gateway to Chinatown International District and the city
- The hub connects Chinatown International District, Pioneer Square and the waterfront, and celebrates the neighborhoods' histories and cultures
- Jackson Hub continues to support mixed income multicultural neighborhoods that include current residents and businesses

How we'd get there

- Build on Jackson Street connections project and Jackson Hub project
- Activate Union Station as a mixed use destination
- The hub is a destination that balances mobility and place
- Develop intuitive and legible connections between transportation modes and into the neighborhoods
- Implement easy-to-understand wayfinding, including special street materials that indicate pedestrian-only spaces
- Integrate transportation hub planning with Sound Transit expansion planning and design
- Mitigation strategies to avoid displacement

What we've heard



- Add a lid over the BNSF train tracks to be used as public space, similar to the Freeway Park or the Millennium Park in Chicago
- Make sure the hub is accessible to people of all abilities and incomes and serves all modes



Share your thoughts!



IMAGINE GREATER DOWNTOWN IS A PARTNERSHIP BETWEEN



City of Seattle



King County



SOUNDTRANSIT



Downtown
Seattle
Association

In coordination with the Port of Seattle and the Washington State Department of Transportation

Heart of greater downtown: Westlake hub

The vision

- Westlake Hub is an easy to navigate transportation hub at the center of Greater Downtown
- Westlake is the geographic heart of greater downtown, with flexible public spaces and places for cultural events
- Place for people - prioritize pedestrian movement and connections to transit over private automobiles

How we'd get there

- Expand "The Wedge" at McGraw Square to encompass the entire block and connect to Westlake Park
- Transform Sixth Avenue into a people and transit street
- Redesign all ground floor frontages for public enjoyment and interaction
- Implement easy-to-understand wayfinding

What we've heard



- Commercial and business activities should serve residents and tourists
- We need a large area where people can gather for rallies and marches



Photo credit: Downtown Seattle Association

Share your thoughts!



IMAGINE GREATER DOWNTOWN IS A PARTNERSHIP BETWEEN



City of Seattle



King County



SOUNDTRANSIT



Downtown
Seattle
Association

In coordination with the Port of Seattle and the Washington State Department of Transportation

Premium mobility networks

The vision

- Every street has a clearly defined role in moving people and goods
- An interconnected bike and walking network serves people of all ages and abilities, and provides safe, enjoyable, protected travel

How we'd get there

- Establish modal priorities throughout Greater Downtown
- Build-out a complete bike network
- Increase water transit (water taxis) and water use (kayak/canoe put-in locations)
- Create a fully accessible downtown - including a complete network of hill climbs
- Connected transit network supports speed and reliability
- Freight and delivery systems support a thriving downtown

What we've heard



- We need a bike network that's accessible for all ages/abilities
- Make sure there's affordable access to bikes and transit
- Transform select streets to be for pedestrians and streetcars only



Share your thoughts!



IMAGINE GREATER DOWNTOWN IS A PARTNERSHIP BETWEEN



City of Seattle



King County



SOUNDTRANSIT



Downtown
Seattle
Association

In coordination with the Port of Seattle and the Washington State Department of Transportation

Freeway stitch / urban repairs

The vision

- Neighborhoods formerly divided by I-5 are reconnected
- Barriers and gaps are filled to create new public space
- Public-private partnerships have been leveraged to create new public open space and infrastructure
- Freeway traffic impacts are reduced (noise, pollution, visual, etc.)

How we'd get there

- Expand the lid over I-5
- Transform freeway underpasses into safe and inviting spaces that serve community needs (for example, Jackson St and King St community efforts)
- Complete the community's vision for the Melrose Promenade
- Upgrade streetscape standards to include benches, consistent tree canopy, and other pedestrian features
- Develop and implement a displacement mitigation strategy
- Improve existing pedestrian overpasses (Madison, Denny, etc.) and add new ones, especially north of Denny

What we've heard



- Connections across I-5 are difficult for all modes
- Let's prioritize improvements to the Chinatown-International District underpass



Photo credit: Downtown Seattle Association



Share your thoughts!



IMAGINE GREATER DOWNTOWN IS A PARTNERSHIP BETWEEN



City of Seattle



King County



SOUNDTRANSIT



Downtown
Seattle
Association

In coordination with the Port of Seattle and the Washington State Department of Transportation

Carbon neutral

The vision

- The greater downtown transportation network is fossil fuel free
- Use public spaces to reduce carbon - make streets synonymous with fresh air
- Greater downtown is a leader and innovator in addressing climate challenges
- Make transit, biking, and walking the most attractive, convenient, safe, and reliable way to move around greater downtown

How we'd get there

- Create fossil fuel-free streets and districts
- Promote parking management strategies
- Implement congestion pricing and manage parking to support transit goals
- Design green streets with green stormwater infrastructure
- Public spaces and streets are natural environments that help absorb carbon from the atmosphere
- Try a car-free Greater Downtown for a day

What we've heard



- Require new mobility options to be carbon neutral
- Let's add more green roofs across downtown!
- More trees more green more beauty!



Share your thoughts!



IMAGINE GREATER DOWNTOWN IS A PARTNERSHIP BETWEEN



City of Seattle



King County



SOUNDTRANSIT



Downtown
Seattle
Association

In coordination with the Port of Seattle and the Washington State Department of Transportation

New mobility to benefit people and climate

The vision

- New mobility and autonomous vehicles are proactively managed to support our shared values
- Autonomous vehicles advance sustainable transportation options and safer streets, as opposed to increasing driving and congestion
- Autonomous vehicles and new mobility are accessible to and meet the needs of communities of color
- Cultivate new mobility options serving the young and old, and people with disabilities, as well as options that bridge gaps in transit service

How we'd get there

- Require autonomous vehicles and new mobility options to be carbon neutral
- Organize new mobility and autonomous vehicles around transit hubs
- Create goods delivery hubs and an e-vehicle/e-bike distribution network (e.g., distribution hubs and neighborhood lockers for goods)
- Manage street design and curb space for the next generation of mobility (e.g., congestion charging, more on-street loading and less on-street parking), but not to the detriment of pedestrian, transit and bicycle movement

What we've heard



- Don't make changes at the expense of economic stability; driving jobs are important for vulnerable member of the population



Photo credit: Mark Gamba, Bike Portland

Share your thoughts!



IMAGINE GREATER DOWNTOWN IS A PARTNERSHIP BETWEEN



City of Seattle



King County



SOUNDTRANSIT



Downtown
Seattle
Association

In coordination with the Port of Seattle and the Washington State Department of Transportation

Other big moves and key ideas?

Let us know — share your big ideas!



IMAGINE GREATER DOWNTOWN IS A PARTNERSHIP BETWEEN



City of Seattle



King County



SOUNDTRANSIT



Downtown
Seattle
Association

In coordination with the Port of Seattle and the Washington State Department of Transportation